

# ESP UPDATE



Winter 2003 Edition



*The Emergency Storage Project is a system of reservoirs, interconnected pipelines and pumping stations designed to make water available to the San Diego region in the event of an interruption in imported water deliveries.*

*The Emergency Storage Project is part of the San Diego County Water Authority's Capital Improvement Program to enhance and increase the operational flexibility of its water delivery system.*

*This newsletter is one way the San Diego County Water Authority is keeping communities like yours informed about the project's progress.*

*For more information, please call toll-free (877) 426-2010 or visit our Web site at [www.sdcwa.org](http://www.sdcwa.org).*



San Diego County Water Authority

Capital Improvement Program

## Completion of Olivenhain Dam Celebrated at Dedication Ceremony

After three years of construction, including 10 straight months of around the clock work, the Olivenhain Dam is complete. In celebration, the San Diego County Water Authority held a dedication event involving more than 700 community members from throughout the San Diego region. Maureen A. Stapleton, general manager of the Water Authority, welcomed everyone to the event that



*Imported water cascades into the Olivenhain Reservoir.*

was held on the floor of the reservoir that will eventually be covered with water.

City of San Diego

Mayor Murphy spoke at the ceremony and proclaimed Sept. 4 as "Olivenhain Dam Day." Olivenhain Dam Project Manager Jerry Reed touted the construction crews who built the project on schedule and under budget. Speakers at the event also included Water Authority and Olivenhain Municipal Water District board members and staff, as well as the contractors and other project team members.

Dr. Madeleine Cosman, a Mount Israel resident who lives very close to the construction site, gave a rousing speech modeled after the Declaration of Independence. She said, "We hold

*See CEREMONY on page 4*



*Dedication officials turn the ceremonial valve to open the inlet/outlet gate.*

## Water Authority Board to Consider San Vicente Pipeline Environmental Study in January

Since February 2003 the San Diego County Water Authority's efforts on the San Vicente Pipeline project have been the preparation of a Draft Subsequent Environmental Impact Report. The Final SEIR will be completed in January 2004. The Water Authority board is scheduled to certify the SEIR and consider project approval at a Jan. 15 board meeting.

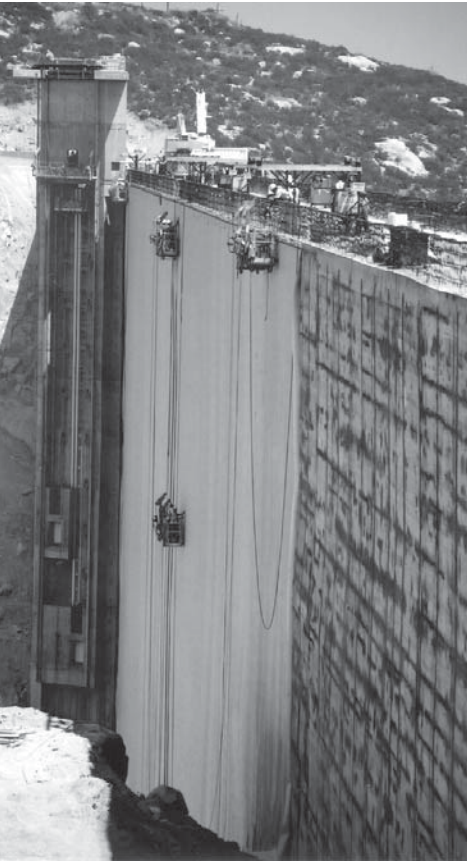
*See ENVIRONMENTAL STUDY on page 2*

## Inside This Issue

- 1 - Dedication Ceremony
- 1 - San Vicente Pipeline Study - January Consideration Planned
- 2 - Olivenhain Dam Activities Continue
- 3 - Olivenhain Pump Station and Surge Control Pipe

## Activities at the Dam Site Continue

Crews in September finished installing a 210,000-square-foot polyvinyl chloride membrane liner on the upstream face (water side) of the dam. The flexible, rubber-like plastic liner will prevent minor leaks and will help the dam to not only withstand a 7.25 magnitude earthquake, but also remain operational after such an event.



*Workers install the membrane liner near the inlet/outlet tower.*

The Water Authority also completed construction of the inlet/outlet control tower. The tower is 345 feet high and stands 27 feet above the top of the dam. The tower has six gates that bring water in and out of the Olivenhain Reservoir through the Olivenhain Pipeline, which connects to the Second Aqueduct.

The Water Authority piped in the first water to the reservoir on Aug. 6. The reservoir will be filled with water from the Water Authority's Second Aqueduct over the next eight to 10 months.

The Water Authority completed the Lake Hodges Headworks, a 500-foot-long tunnel from the Olivenhain Reservoir toward Lake Hodges. The gates will control water flow between the reservoir and Lake Hodges and will allow the portion of tunnel built from Lake Hodges to be completed without lowering the water level in the Olivenhain Reservoir. The remaining 1.25 miles of tunnel that will connect Lake Hodges to the Olivenhain Reservoir is currently in the design phase and is scheduled to begin construction in early 2006.

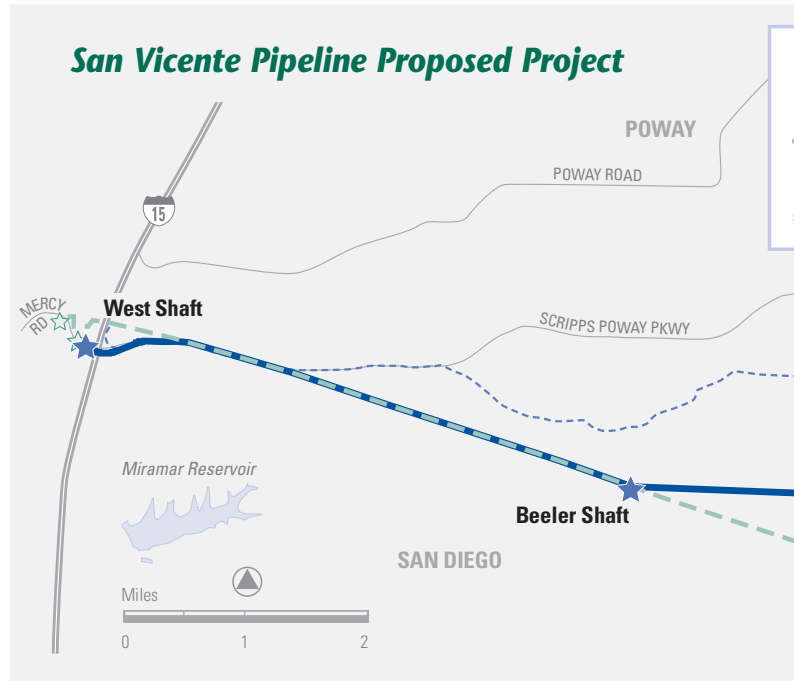
Olivenhain is the first major dam that has been built in San Diego County in nearly 50 years. The Olivenhain Dam project is part of the Water Authority's Emergency Storage Project, which will protect San Diego County in the event of a major earthquake or other disaster.

Olivenhain is the first major dam that has been built in San Diego County in nearly 50 years. The Olivenhain Dam project is part of the Water Authority's Emergency Storage Project, which will protect San Diego County in the event of a major earthquake or other disaster.

Olivenhain is the first major dam that has been built in San Diego County in nearly 50 years. The Olivenhain Dam project is part of the Water Authority's Emergency Storage Project, which will protect San Diego County in the event of a major earthquake or other disaster.

## ENVIRONMENTAL STUDY *continued from page 1*

When making a final decision on how to construct the pipeline, the board will consider factors including the SEIR environmental findings, community concerns, cost and project schedule. Water Authority board meetings are open to the public and provide an opportunity for anyone to address the board. The time of the Jan. 15 board meeting will be posted on the Water Authority's Web site.



*A map taken from the Draft SEIR display.*

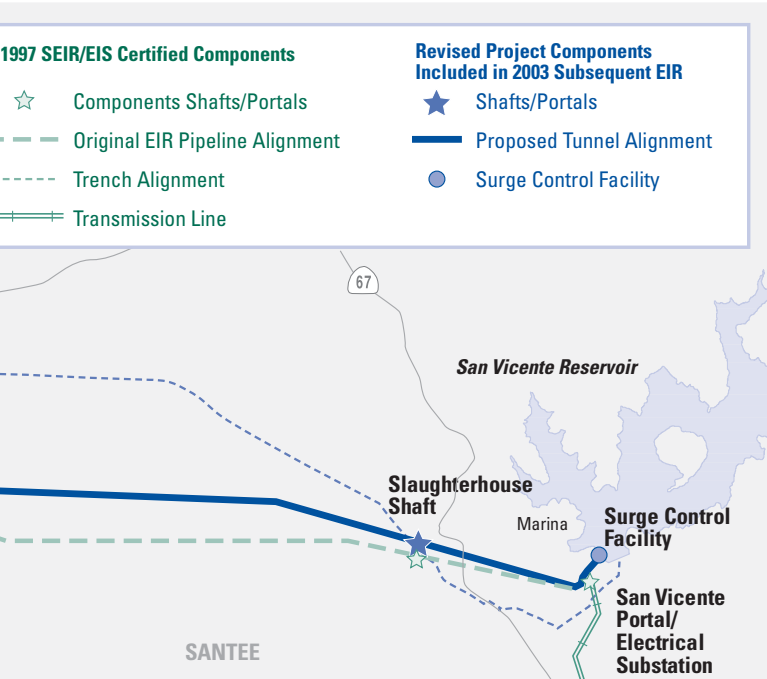
The Draft SEIR was made available for review on Aug. 22. The Water Authority received comments on the Draft SEIR during a 45-day public review period ending Oct. 6. During the public review period, the Water Authority held an open house and public hearing at its Kearny Mesa office on Sept. 17 and more than 30 people attended.

Copies of the Final SEIR will be provided to the Scripps Ranch Community Service Center and the Lakeside, Poway, Santee and Scripps Ranch public libraries. The document will also be posted on the Water Authority's Web site.

In 1997, the Water Authority certified an Environmental Impact Report/Environmental Impact Statement that included constructing the San Vicente Pipeline in either a cut-and-cover trench or a tunnel. In 2001, the Water Authority selected tunnel

construction for the pipeline. This decision significantly reduced the impacts of construction on the environment and the public along the 11-mile-long pipeline route.

The purpose of the new SEIR is to evaluate only those elements of the pipeline project that have changed since 1997, including rerouting a portion of pipeline alignment, locating shafts needed during construction of the tunnel and pipeline, and adding a surge control facility near the San Vicente Dam.



the four proposed shaft/portal locations.

The pipeline is scheduled to begin construction in the spring of 2005 and will take approximately four years to build. More information regarding the project and the SEIR can be found on the Water Authority's Web site at [www.sdcwa.org](http://www.sdcwa.org) or by calling the Emergency Storage Project information line at **(877) 426-2010**. 

The final SEIR  
will be posted on the  
Water Authority's  
Web site,  
[www.sdcwa.org](http://www.sdcwa.org)

## Olivenhain Pump Station and Surge Control Pipe


Work continues to progress on the Olivenhain Pump Station project, which includes construction of a surge control pipe. In the event of a power outage during a pumping operation, damage could be caused by a strong wave or surge of water. The surge control pipe will reduce stress and water damage to both the pipelines and the pump station. The surge control pipe is a place for the wave of water or surge to go.

Once the final alignment for the surge control pipe is determined, excavation and trenching operations will begin, including some



*The Olivenhain Dam serves as an impressive background to the Olivenhain Pump Station.*

minor blasting. In most cases the blasts will go unnoticed by the community. Once the pipe is installed, the trench will be backfilled and revegetated with native plants. A horse trail is also planned to run the length of the pipe.

When the Olivenhain Pump Station is complete, it will be used to fill and move water out of the Olivenhain Reservoir. In the case of an emergency, the pump station will be used to transport water from the reservoir to other areas in the county by pumping it north and then allowing it to flow south by gravity through the pipelines in the Water Authority's Second Aqueduct. Pumps were installed in July. Installation of all piping between the reservoir and the Olivenhain pipeline, as well as construction of the pump station building, are scheduled to be complete by the end of December. Since gravity alone can be used for filling most of the reservoir, the first phase of filling began before the pump station's completion. Testing of the pumping operations to fill the reservoir will begin in December. 








*Water Authority General Manager Maureen Stapleton welcomed dedication event attendees on Sept 4.*

**CEREMONY** *continued from page 1*

these truths to be self evident, that all San Diego land was created equally dry, and endowed by its creator with certain inalienable rights to drought, desert and the pursuit of water. To secure precious water, the San Diego County Water Authority and Olivenhain Municipal Water District were instituted among citizens with just powers.”

Although Dr. Cosman endured noise and other disturbances during the construction of the dam, she said, “Now the dam is done, I am proud of its advanced technology. I am proud of its dazzling, efficient Kiewit construction. I am proud of its stark, clean beauty. I am proud that men and women of integrity foresaw that our inalienable rights to drought, desert and the pursuit of water forced upon us the inalienable responsibility to provide emergency water.” 

*For more*  
**information**

**About the San Diego County Water Authority’s  
Emergency Storage Project,  
please call toll free (877) 426-2010  
or visit our Web Site at: [www.sdcwa.org](http://www.sdcwa.org).**

Photographs © 2003, John W. Alexanders and the Water Authority’s construction team.



**San Diego County  
Water Authority**

**4677 Overland Ave.  
San Diego, CA 92123**

***The Water Authority is a public agency serving the San Diego region as a wholesale supplier of water. The Water Authority works through its 23 member agencies to provide a safe, reliable water supply to support the region’s \$130 billion economy and the quality of life of nearly 3 million residents.***